



SIMPLE ORDER INTEGRATION API

August 2020

Xpressdocs Partners, Ltd. 1301 NE Loop 820, Fort Worth, TX 76137, USA
+1 817.547.9743 | www.xpressdocs.com

- 1 INTRODUCTION 3**
- 2 SECURITY..... 3**
- 3 ORDER INTEGRATION FLOW 4**
 - 3.1 PROCESS MAP4
 - 3.2 OVERVIEW.....5
 - 3.3 REQUEST5
 - 3.4 VALIDATION OF REQUEST6
 - 3.5 ORDER CREATION6
- 4 ORDER AND RESPONSE ELEMENTS 7**
 - 4.1 ORDER SCHEMA ELEMENTS.....7
 - 4.2 RESPONSE ELEMENTS (OPTIONAL)7
 - 4.3 RESPONSE SCHEMA ELEMENTS8
- 5 DEPLOYMENT 9**
 - 5.1 ENVIRONMENTS9
 - 5.2 DIAGNOSTICS9
 - 5.3 TASKS9

1 Introduction

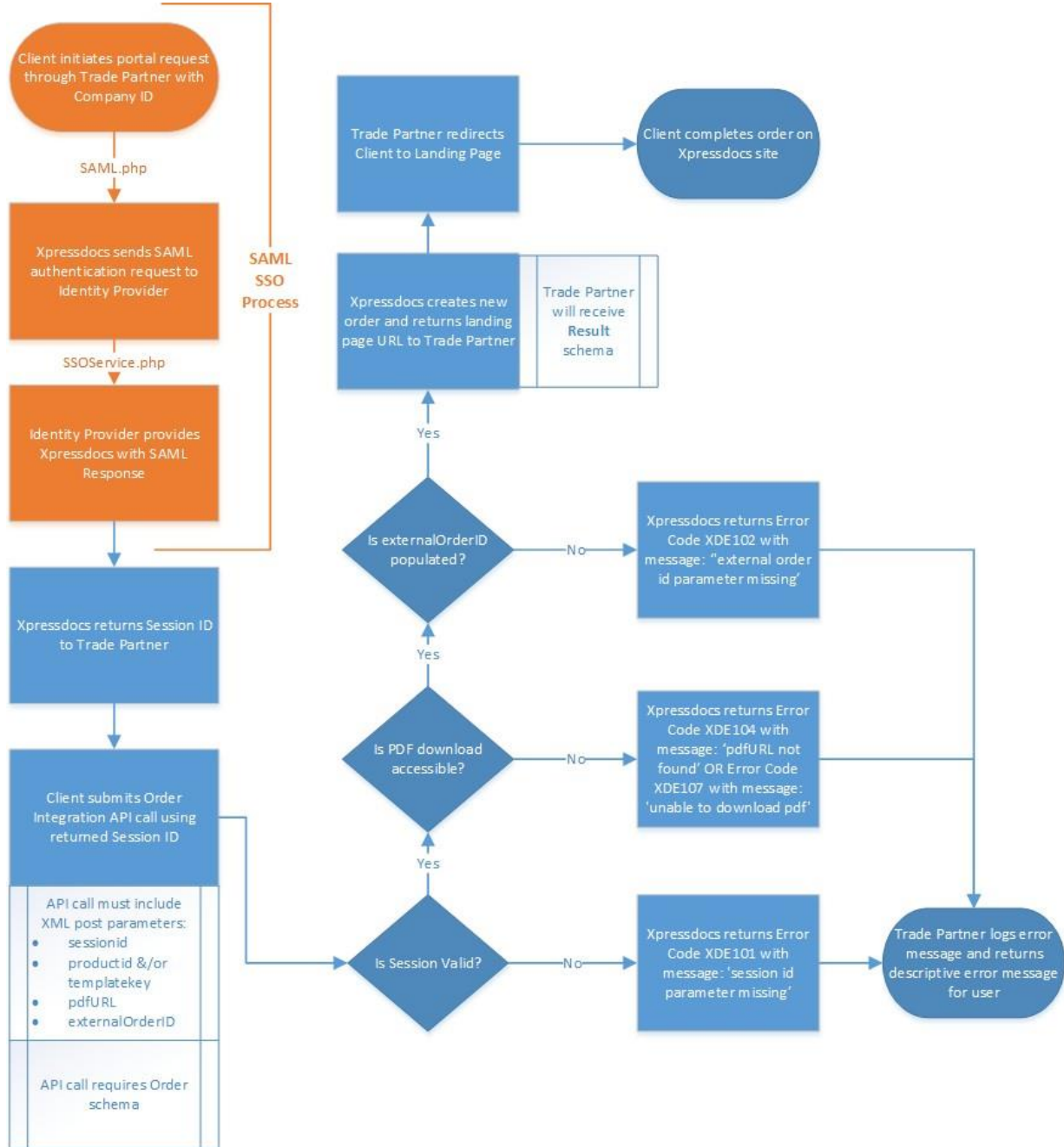
This document describes the Xpressdocs Simple Order Integration protocol for Trade Partner punch-in to the Xpressdocs platform order distribution flow. Xpressdocs accepts punch-in-requests with print-ready-files and redirects the end-user to complete the order.

2 Security

Xpressdocs Order Integration API requires Trade Partners' external IP address(es) to allow access to the Xpressdocs platform. In order to rely upon this API, Trade Partners must have an established SAML Single Sign On Integration (please refer to ***XD_SAML_SSO_API_v3.x.pdf*** document).

3 Order Integration Flow

3.1 Process Map



3.2 Overview

The Trade Partner will call Xpressdocs Simple Order Integration by adding Order Integration Variables to a POST to the SAML link provided by Xpressdocs. This is accomplished by incorporating a simple HTTP POST to our server, either by using a link and posting with JavaScript, or by providing a submit button to launch Xpressdocs.

For Testing: (XD must allow the IP address to access these URLs)

1. <https://www-stagetre.xpressdocs.com/next/sso/saml.php?company=<providedByXD>>

For Production:

1. <https://www.xpressdocs.com/next/sso/saml.php?company=<providedByXD>>

3.3 Request

This section describes the standard implementation HTML schema for use in Single Sign-On requests. The value for the company field will be supplied by Xpressdocs; while all other values, such as “123ABC”, should be replaced with the correct value from the client side.

The Trade Partner will input the order as HTML post parameters (see [4.1 Order Schema Elements](#) for definitions):

```
<form name="XpressdocsOrderIntegration"
action="https://www.xpressdocs.com/next/sso/saml.php?company="method="pos
t">
<input type="hidden" name="pdfUrl" value="www.your_pdf_url.pdf">
<input type="hidden" name="externalOrderId" value="YourOrderID">
<input type="hidden" name="productid" value="XpressdocsWillProvide">
<input type="hidden" name="templatekey" value="XpressdocsWillProvide">
<input type="submit" value="label of your choice">
</form>
```

1. pdfUrl
2. externalOrderId
3. productid
4. templatekey

3.4 Validation of request

1. Xpressdocs will download the PDF at the provided **pdfUrl**.
 1. When the user is punching out of the Trade Partner's portal, Xpressdocs will validate that the pdf url is accessible. In the event of an error, an error message will be generated (XDE104 or XDE107) and returned. The Trade Partner should log the error message returned for troubleshooting purposes.
2. Next, Xpressdocs will verify the **externalOrderId** is not empty.
 1. The Trade Partner must provide a unique reference identifier for each order to ensure tracking of all orders. If this value is not provided, an error message will generate (XDE102).
3. Finally, Xpressdocs will verify that the productid &/or the templatekey were provided.
 1. The Trade Partner must provide either the templatekey that associates their template to the corresponding Xpressdocs template or the Xpressdocs productid that is associated with their template.
 1. This allows Xpressdocs to match the pdf to the appropriate product and to handle special case needs such as page orientation.
 2. If neither of these are provided an error message will be generated (XDE108) and returned. The Trade Partner should log the error message returned for troubleshooting purposes.

If all validations pass, the process will continue.

3.5 Order Creation

Xpressdocs will create a new order and populate the known fields, including the externalOrderId as provided by the Trade Partner. Xpressdocs will redirect users into the Xpressdocs Platform. The user will then complete the order through the Xpressdocs platform order flow.

4 Order and Response Elements

This section describes the HTML elements of an order request in detail.

4.1 Order Schema Elements

Field	Description	Required	Error message if missing/invalid	Value Type
pdfUrl	Trade Partner provided location of print-ready-file	YES	'XDE104' => 'pdf url not found' OR 'XDE107' => 'unable to download pdf'	String
externalOrderId	Trade Partner's unique order reference number	YES	'XDE102' => 'external order id parameter missing'	Alphanumeric or Numeric
productid	Product code provided by Xpressdocs	YES	'XDE103' => 'product id parameter missing'	Alphanumeric
templatekey	Template key provided by Xpressdocs	No	'XDE103' => 'product id and template key parameter missing' 'XDE108' => 'given template key not related for given product code'	Alphanumeric

4.2 Response Elements (Optional)

For every order API request submitted, the Trade Partner may receive a **Result** schema response using standard XML.

```
<?xml version="1.0" encoding="UTF-8"?>
<result>
<orderid/>
<externalOrderId>RL1234</externalOrderId>
<redirectUrl/>
<status>ERROR</status>
<code>XDE101</code>
<message>session id parameter missing</message>
<severity>FATAL</severity>
</result>
```


4.3 Response Schema Elements

Field	Description
Ordered	Xpressdocs production order identifier
externalOrderId	Trade Partner's unique order reference number (may be alphanumeric or numeric)
Status	Result of order distribution request; Possible Values: SUCCESS ERROR
code and associated message	Error codes and associated message to provide details on error type; Possible Values: 'XDE101' => 'session id parameter missing' 'XDE102' => 'external order id parameter missing' 'XDE103' => 'product id parameter missing' 'XDE104' => 'pdf url not found' 'XDE105' => 'company not found' 'XDE106' => 'template not found based on product code' 'XDE107' => 'unable to download pdf' 'XDE108' => 'given template key not related for given product code'
Severity	Description of error type; Possible Values: FATA L ERR OR WAR N INFO

5 Deployment

5.1 Environments

Xpressdocs has the following:

Name	Description
Stage	Staging environment for QA testing
Production	Live production environment

Xpressdocs will provide one non-production environment for testing purposes (Stage). A Trade Partner's production environment will point to Xpressdocs's production environment by default.

5.2 Diagnostics

Xpressdocs logs all requests sent to and received from Trade Partners. Xpressdocs recommends that Trade Partners do this as well. Troubleshooting issues is much easier when a clear record of what data was exchanged exists, including error messages and what happened as a result.

5.3 Tasks

Xpressdocs needs to do the following to integrate with a Trade Partner:

1. Add Trade Partners' IP address(es) to firewall allow list
2. Provide the IP address range for both Xpressdocs platform environments
3. Xpressdocs must provide Trade Partners with product IDs &/or template keys
4. Xpressdocs must support both SAML SSO and Order Integration setup with Trade Partner
5. SAML SSO integration requires validation of SAML attribute exchange
6. Upon successful testing of SAML integration, then Order Integration testing can begin
7. Xpressdocs must coordinate both SAML SSO and Order Integration testing with Trade Partners prior to deployment